



# Haley Farmer (Bolivar)

NOV 16, 1992 - FEB 5, 2014



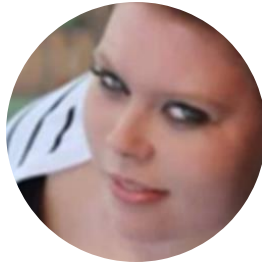
Scan to Visit



**HOLMAN  
HOWE**  
FUNERAL HOMES

# Table of Contents

<b>Obituary</b> .....	Page 3
<b>Events</b> .....	Page 5



## **Haley Farmer (Bolivar)**

NOV 16, 1992 - FEB 5, 2014

**H**aley Farmer, age 21 of Halfway, Missouri was called to be an Angel with her Lord and Savior on Wednesday, February 5, 2014 at her home in Halfway with the love of her family by her side.

Haley was born in Springfield, Missouri on November 16, 1992 the daughter of Patricia (Finch) Farmer and Jason Farmer.

She was a 2011 graduate of Halfway High and attended Missouri Western for her first year of college, later transferring to Ozark Technical College. She was employed at Bass Pro in Springfield.

Haley was a passionate young woman, anyone that knew her will attest to that. She loved making others happy, her smile was beautiful, and her laughter was contagious. She beamed positivity and strength which encouraged others. Haley had a kind way about her, she put others first. Even through her illness she remained strong and always had a smile for people. Haley was a wonderful friend and a great older sister. She enjoyed scary movies, crafts, crocheting and knitting, but most of all she loved to write. She kept people informed on her story at her Facebook titled "Sincerely Haley: Haley vs Ewing's Sarcoma". Haley was working on a novel up until her passing; it will be published in the future.

Haley was preceded in death by her great-grandparents; Claude and Mabel Haley, grandmother; Phyllis Finch, aunt; Theresa Dyer, uncle; John Haley, and her great-grandfather; Azel Farmer.

She is survived by her mother; Patricia Farmer of Halfway and Patricia's fiancé David Hanson of Licking, her sister; Micala Farmer of Halfway, father; Jason and Toni Farmer of Halfway, brother; Latham Melton-Farmer of Mountain Grove, brother; Kayleb Farmer of Halfway, sister; Haley Payne of Halfway, brother; Tanner Payne of Halfway, brother Russell Butts and his wife Tara of Marshfield, grandparents; Lavern and Laura Farmer of Buffalo, grandparents; Tom and Lorraine Redd of Halfway,



## Obituary

**Haley Farmer (Bolivar)**

NOV 16, 1992 - FEB 5, 2014

---

great-grandmother; Ramona Metcalf of Buffalo, grandparents Wally Dyer of Litchfield, Maine and James Finch of Halfway, along with numerous aunts, uncles and cousins. Haley will be greatly missed.

Memorial contributions may be made to C.J.'s Journey St. Charles Cancer Research and/or The Hope Lodge St. Louis.



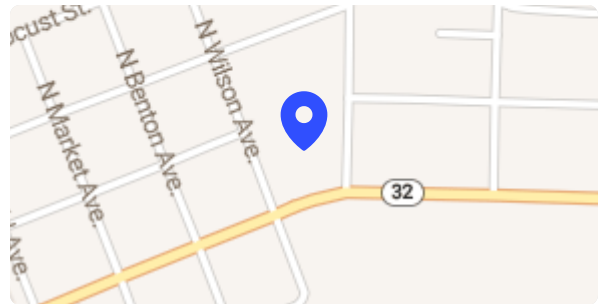
# Events

**Haley Farmer (Bolivar)**

NOV 16, 1992 - FEB 5, 2014

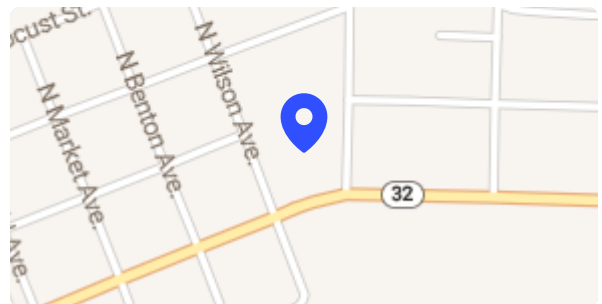
## Service

- Saturday**, February 8, 2014
- 1:00 PM CT
- Butler Funeral Home - Bolivar**  
407 East Broadway, Bolivar MO 65613



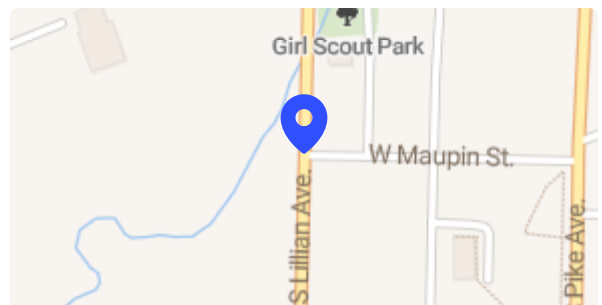
## Visitation

- Saturday**, February 8, 2014
- 5:00 PM - 7:00 PM CT
- Butler Funeral Home - Bolivar**  
407 East Broadway, Bolivar MO 65613



## Cemetery Details

- Greenwood Cemetery**  
W. Maupin St, Bolivar MO 65613





## **Memories only last if you share them**

Join us in honoring Haley by contributing to a collection of shared memories.



**Scan to Visit**

